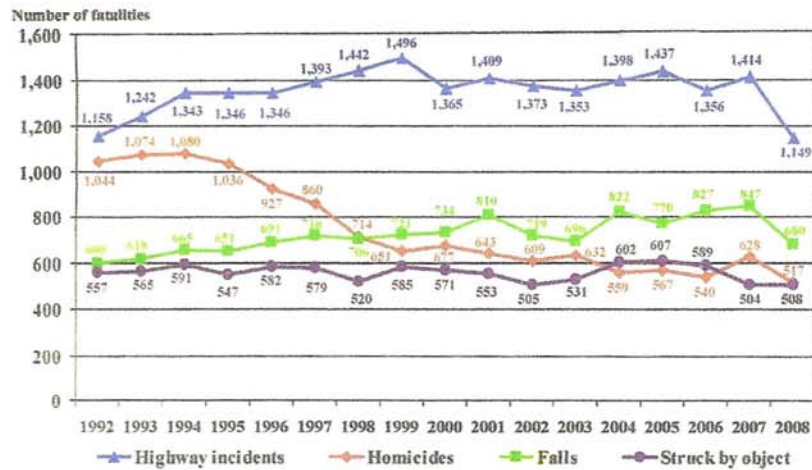


Four most frequent work-related fatal events, 1992–2008*



*Data for 2008 are preliminary. Data for prior years are revised and final.
 NOTE: Data from 2001 exclude fatalities resulting from the September 11 terrorist attacks.
 SOURCE: U.S. Bureau of Labor Statistics, U.S. Department of Labor, 2009.

The 680 fatal falls in 2008 represent a 20 percent decline from the series high of 847 fatal falls in 2007. Fatal falls to a lower level, which accounted for 85 percent of all falls, were down 23 percent in 2008. Fatal falls from roofs were down 26 percent and falls from ladders decreased by 14 percent. The number of fatal falls on same level (to a floor or walkway or against an object) increased slightly in 2008.

Workplace suicides rose from 196 cases in 2007 to 251 cases in 2008, an increase of 28 percent and the highest number ever reported by the fatality census. Suicides among protective service occupations rose from 14 in 2007 to 25 in 2008. Workplace homicides fell by 18 percent in 2008.